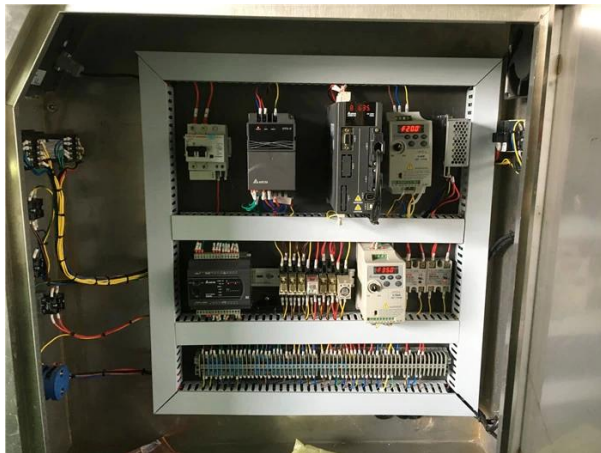
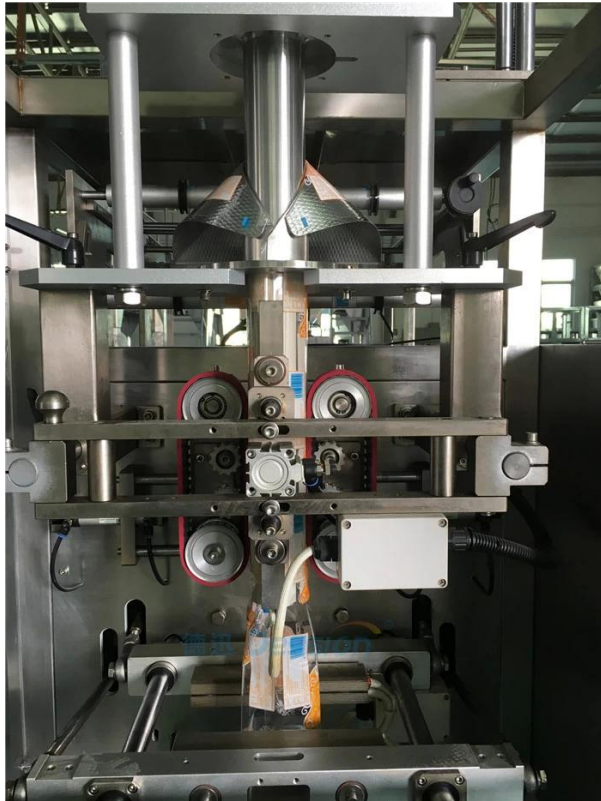


1kg mahcine



1kg mahcine



000 00:

1. 00: 00 000, 000, 00, 00, 00, 00/00 000 0 00 000 00000.
2. 000: 00 000 000 0000 00 00 000 00 000 0 0000.
3. 00: 0 000 00 0000 00 0000 00 00 000 00 0 0000;
4. 00: 000 000 000 0000 00 000 000 00000;
5. 000: 00 000 000 00 000, 00.

□□□□□□ :

[illegible]





□□ □□ □ □□:

□□□

Dession□ □□ □□□ □□□ □□□ □□□ □□ □□ □□□□ □□□□.

(□□ □□)

□□□ □□

□□□ □□□□ □□□ □□□ □ □□□□, □□□□ □□, □□ □□ □□□□, □□ □□□ □□ □□□□ □□□□ □ □ □□□□.



□□ □ □□□:

### WHY CHOOSE DESSION ?

- MADE TO MEASURE SOLUTIONS
- TECHNICAL ADVICE CONCERNING PACKAGING
- REMOTE TRAINING AND SUPPORT
- DESPATCH OF SPARE IN NO TIME

### AFTER-SALE SERVICE

1. Manules/Videos of machine installation, adjusting, setting, maintenance are provided to help with the machine.
2. If any problem occurred, video communication available on 24 hours ;
3. Dession engineers & technicians are available send to your country for service if you accept to be charge the expenditure;
4. Warranty: 2 years guranty of Electric accessories and free life time maintenance of machine excluding freight ;
5. Dession has an independent team for after-sale service. any emergency please call the salesman in sevice of you.

□□ □□

## Company introduction

### Our Company

**FOSHAN DESSION PACKAGING MACHINERY CO., LTD** is a comprehensive modern company integrating research, manufacturing and sale. Since founded, It has been taking shape by advanced technology which we continuously research, develop and apply.

**11** years manufacturer



Company plant area of more than 8000 square meters, more than 120 employees, including 8 engineers, designers 4 people, research and development team with nearly 20 people.



All technologies and equipments are based on practicality and applicability, striving to improve efficiency and creating surplus value to the utmost for customers.



□□□ □:



